

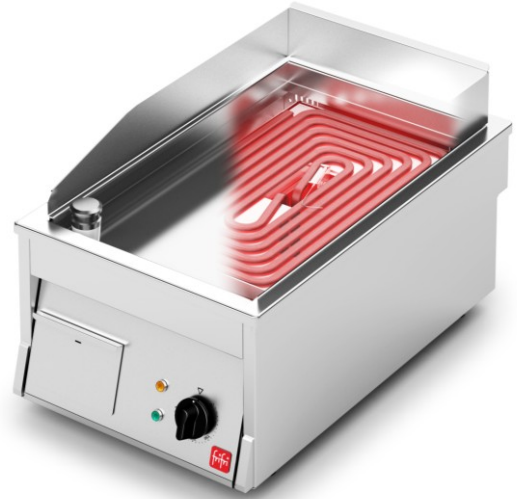


Electric Griddles 400 and 800mm Wide

700000, 700001, 700002, 700003

Key Features

- Perfect for front of house or theatre style cooking
- 15mm thick chromed griddle plate, heats up quicker than standard griddles with less energy loss as well as reduced energy radiation. Keeping air cooler for staff and reducing pressure on the ventilation system
- Large cooking area
- High specification, flat bar element, transfers heat efficiently to the griddle plate
- Precise thermostatic control up to 275°C for consistent results and economical operation
- Complete power disconnect at off position
- A sunken well and plug allow for sautéing and facilitate cleaning
- Counter top or free standing options available



Construction

- Permanent laser etched markings on fascia
- 15mm thick chromed griddle plate
- Top welded sealed plate
- 0.8mm stainless steel fascia panel
- 1.0mm stainless steel side panels
- 2.0mm stainless steel hob top
- Welded stainless steel oil/ fat collection drawer
- Manufactured fully from 304 grade stainless steel for long service life



Options

- 700000 Counter top 400mm wide
- 700001 Freestanding 400mm wide
- 700002 Counter top 800mm wide
- 700003 Free standing 800mm wide

Accessories

- N/A



Electric Griddles 400 and 800mm Wide

Technical Data

	400mm		800mm	
	700000	700000/SPH	700002	700002/SPH
Width (mm)	400		800	
Depth (mm)	630			
Overall height (mm) Countertop	285			
Overall height (mm) Free Standing	890			
Cooking area w x d (mm)	333 x 584		733 x 584	
Heat input (kW)	4.3		2 x 4.3	
Total electrical power rating (kW)	4.3		8.6	
Electrical supply 1N~+E 230V 50-60Hz Current Rating (Amps)	N/A	18.7	N/A	37.4
Electrical supply 3N~+E 400V 50-60Hz Current Rating (Amps)	L1 – 10.8 L2 – 10.8	N/A	L1 – 21.6 L2 – 21.6	N/A
Net weight (kg)	65		95	
Packed weight (kg)	72		100	
Shipping volume (m3)	0.4		0.8	
IPX Rating	IPX4		IPX4	

